

CILINDRI STOPPER
STOPPER CYLINDERS

CARATTERISTICHE TECNICHE - TECHNICAL CHARACTERISTICS

Pressione di esercizio <i>Working pressure</i>	2 ÷ 10 bar (semplice effetto - <i>single acting</i>)
Temperatura di esercizio <i>Working temperature</i>	-20 ÷ +80 °C (con aria secca - <i>with dry air</i>) -10 ÷ +150°C (con aria secca e guarnizioni alta temperatura <i>with dry air and seals for high temperature</i>)
Versioni - Versions	semplice effetto molla posteriore - <i>single acting posterior spring</i>
Alesaggi - Bores	Ø 020 - 032 - 050 - 080
Corse - Strokes	vedere tabelle corse standard - <i>see standard stroke tables</i>
Fluidi - Fluid	aria compressa, filtrata, non lubrificata - <i>compressed air, filtered, no lubrication</i>

CARATTERISTICHE COSTRUTTIVE - CONSTRUCTIVE CHARACTERISTICS

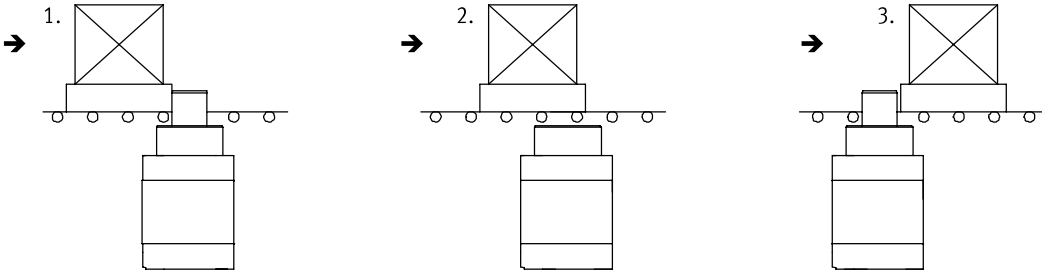
Testate - Covers	alluminio anodizzato - <i>anodized aluminium</i>
Tubo - Tube	alluminio anodizzato - <i>anodized aluminium</i>
Stelo - Piston rod	acciaio inox AISI 303 - <i>stainless steel AISI 303</i>
Pistone - Piston	alluminio - <i>aluminium</i>
Magnete - Magnet	plastroferrite - <i>rubber magnet</i>
Guarnizioni - Seals	poliuretano/nbr - <i>polyurethane/nbr</i>
Boccola - Bush	acciaio+PTFE - <i>steel+PTFE</i>
Viti - Screws	acciaio - <i>steel</i>
Molla - Spring	acciaio - <i>steel</i>
Ammortizzo - Cushioning	elastico - <i>elastic</i>

CHIAVE DI CODIFICA - KEY CODE

P	S	T	0	5	0	.	0	3	0	.	G	S	.	L
			ALESAGGIO - BORE (Ø)				CORSA - STROKE (mm)				STELO - ROD			
			020				015				L Liscio Smooth			
			032				020							
			050-080				030				R Con rullino With roller			
VERSIONE - VERSION														
ST STOPPER semplice effetto magnetico stelo esteso rod extended magnetic single acting STOPPER														
SERIE - SERIES														
P Tubo profilato ISO con cave per sensori ISO poofile tube with slot for sensor														
A Tubo profilato UNITOP con cave per sensori UNITOP profile tube with slot for sensor														
												GUARNIZIONI - SEALS		
												GS guarnizioni standard standard seals		
												VR guarnizione stelo per alte temperature high temperature rod seal		
												VA tutte le guarnizioni per alte temperature all seals for high temperature		

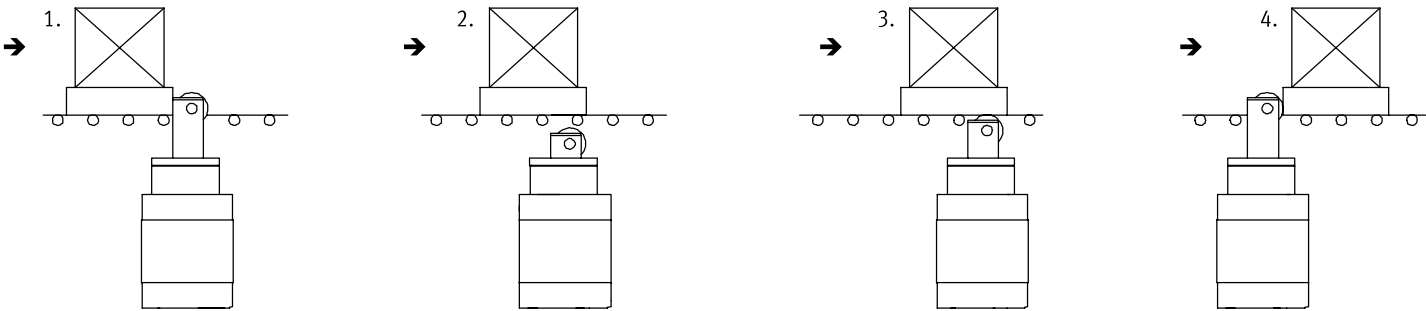
SCHEMA DI FUNZIONAMENTO - *DIAGRAM OF OPERATION*

STELO LISCIO - *SMOOTH ROD*



SCHEMA DI FUNZIONAMENTO - *DIAGRAM OF OPERATION*

STELO CON RULLINO - *ROD WITH ROLLER*

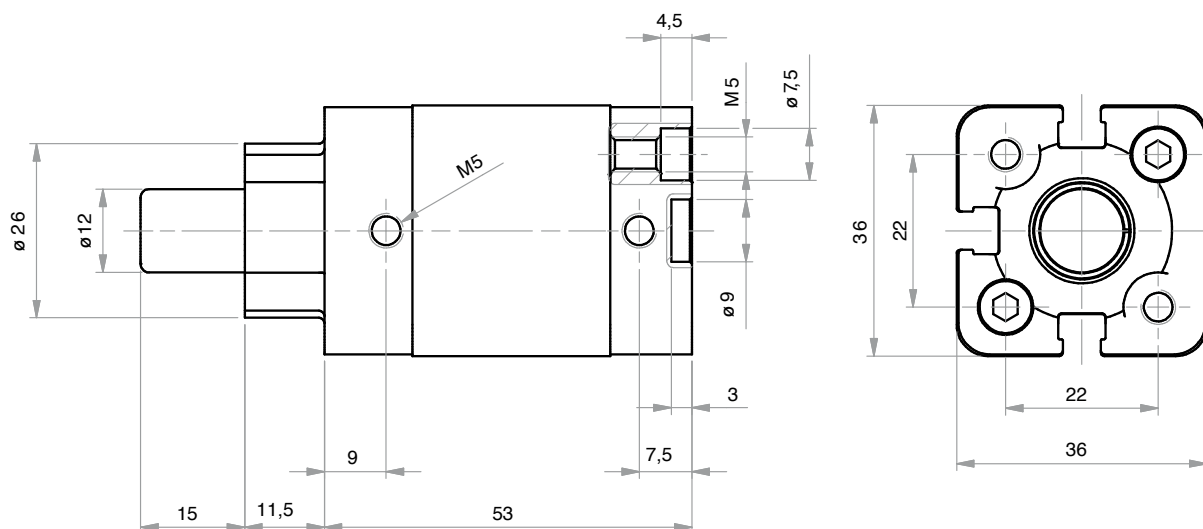
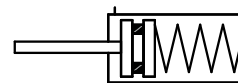


FORZA TEORICA MOLLA - *SPRING THEORETICAL FORCE*

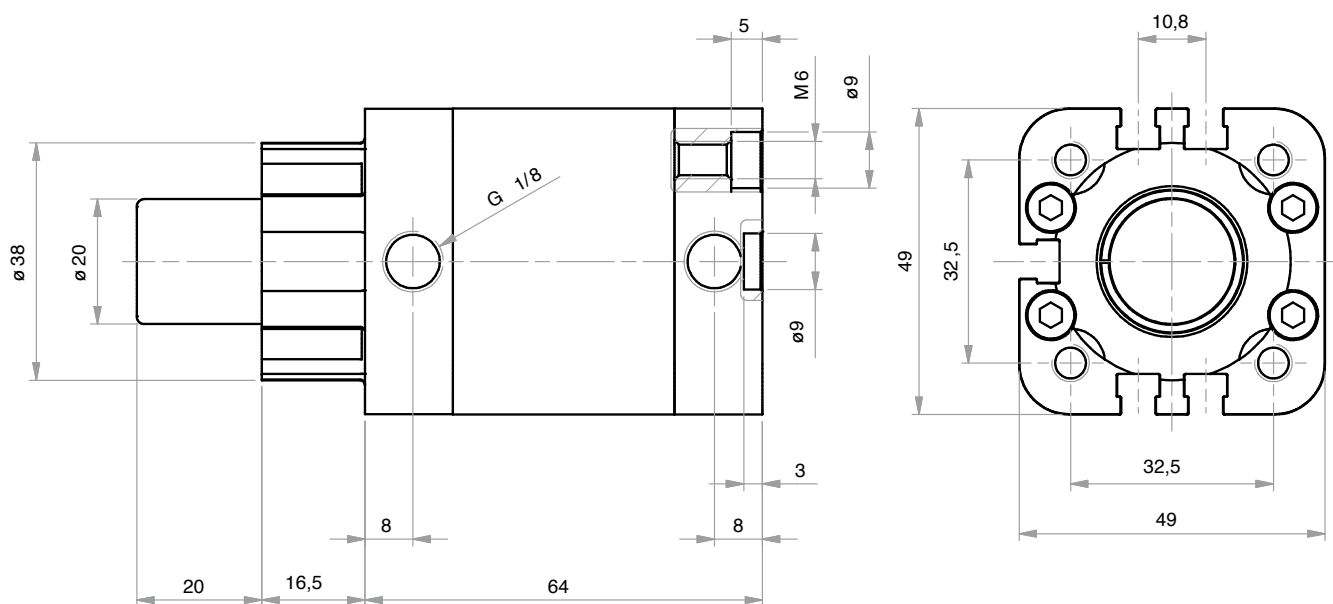
			Ø	020	032	050	080
AST	PST	CARICO MAX - <i>MAX LOAD</i>	[N]	36	51	78	187
		CARICO MIN - <i>MIN LOAD</i>	[N]	28	36	49	133

PST020.015.GS.L

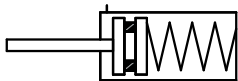
PST



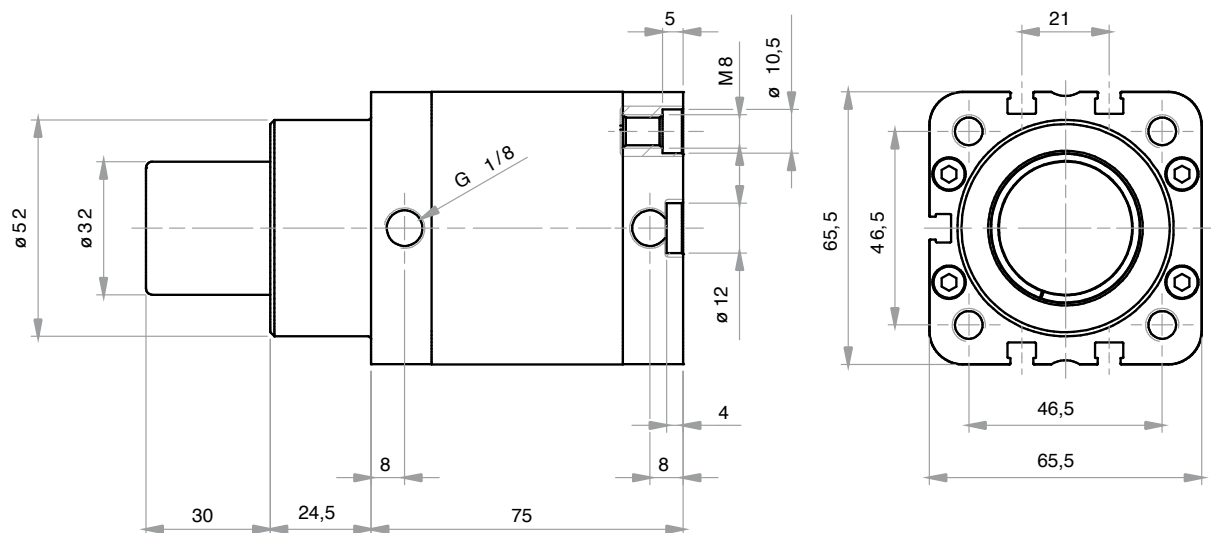
PST032.020.GS.L



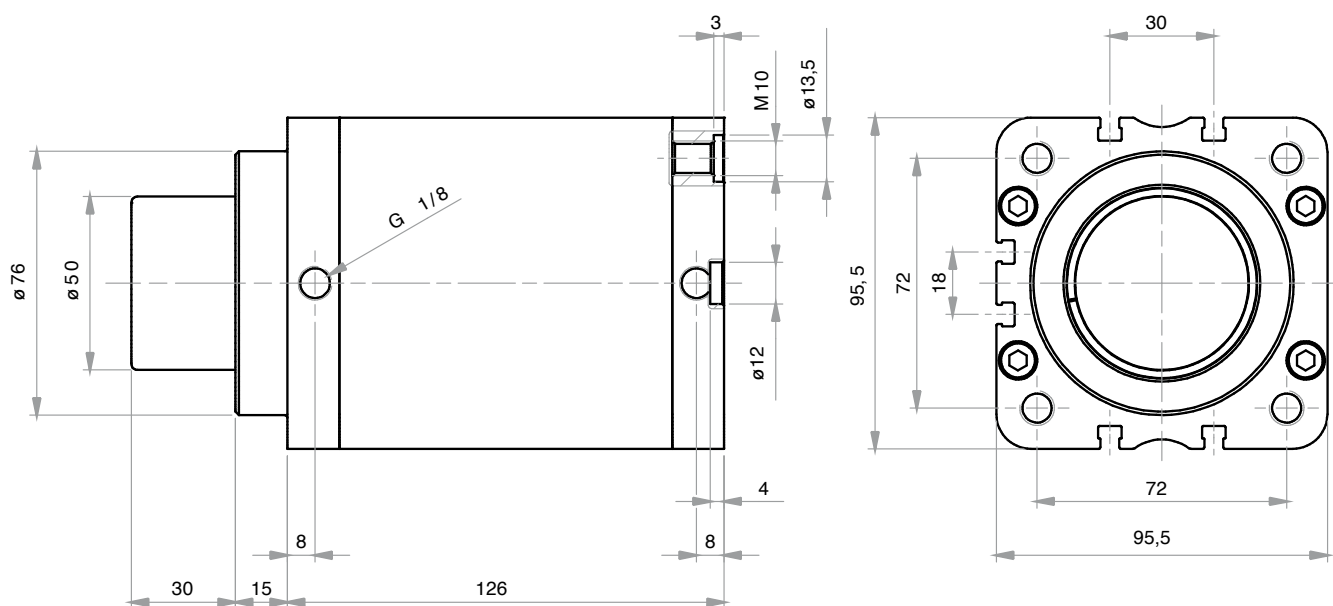
PST



PST050.030.GS.L

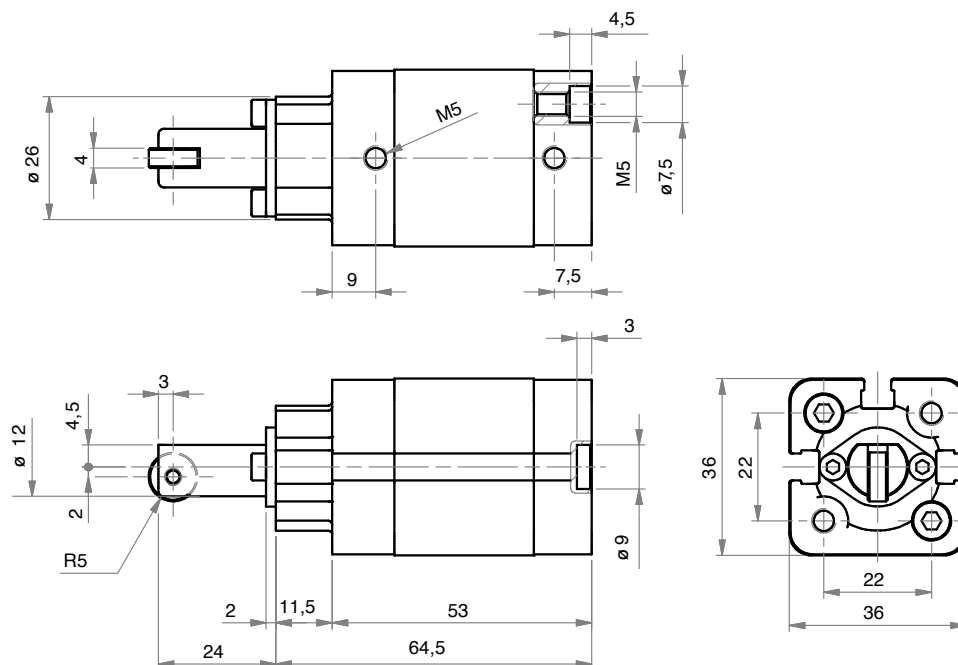
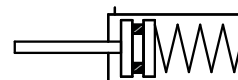


PST080.030.GS.L

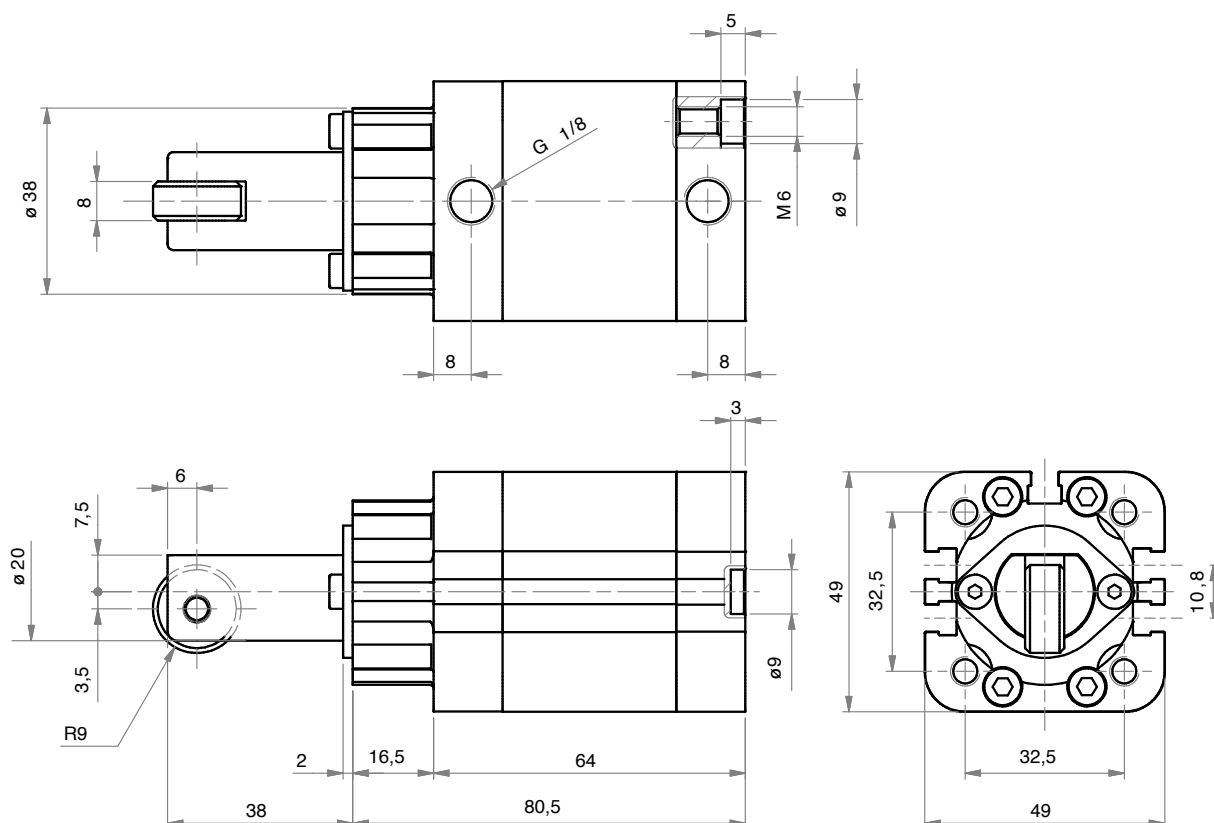


PST020.015.GS.R

PST

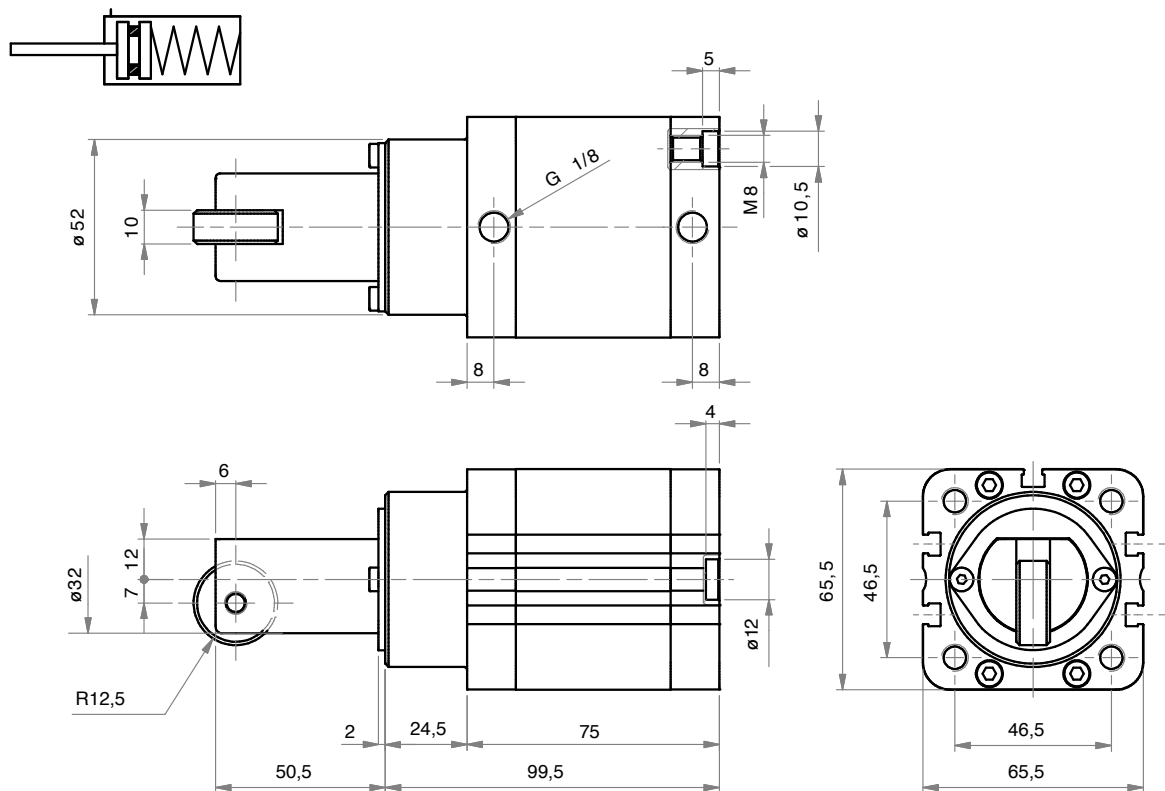


PST032.020.GS.R

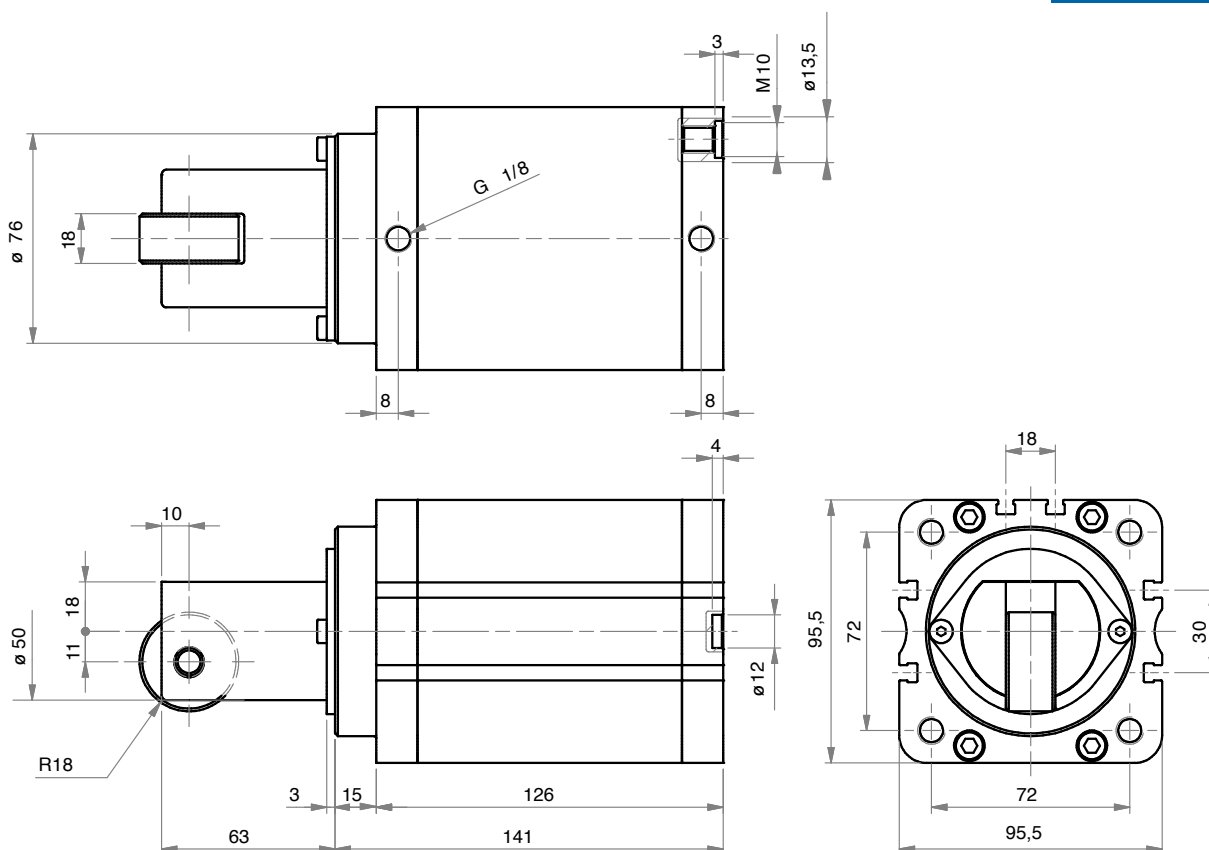


PST

PST050.030.GS.R

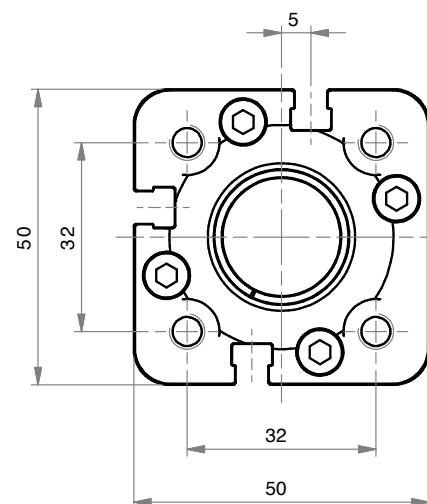
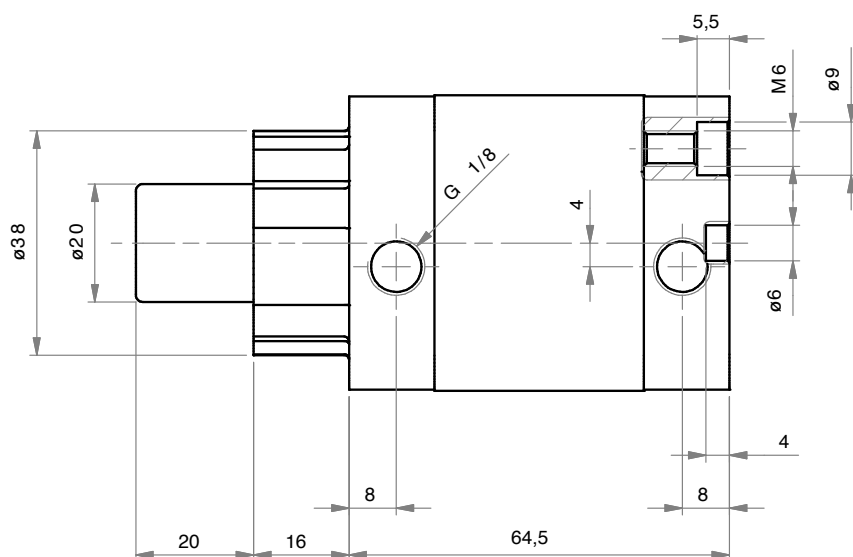
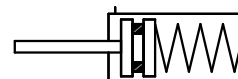


PST080.030.GS.R

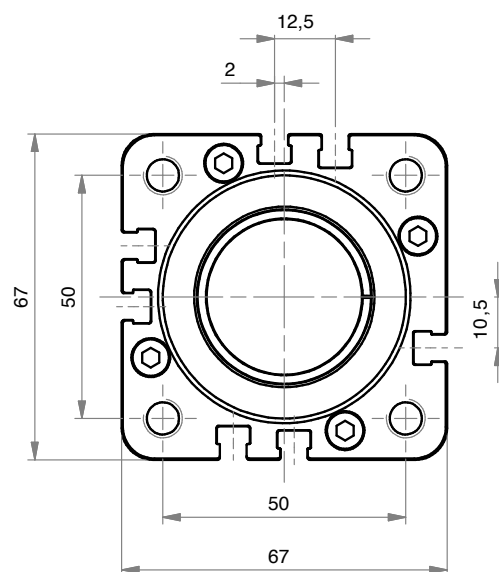
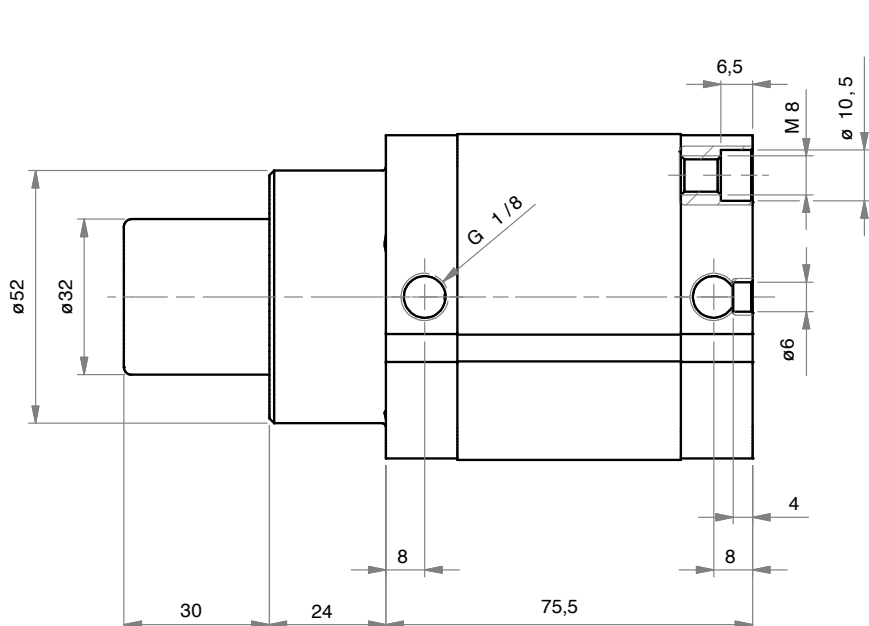


AST032.020.GS.L

AST

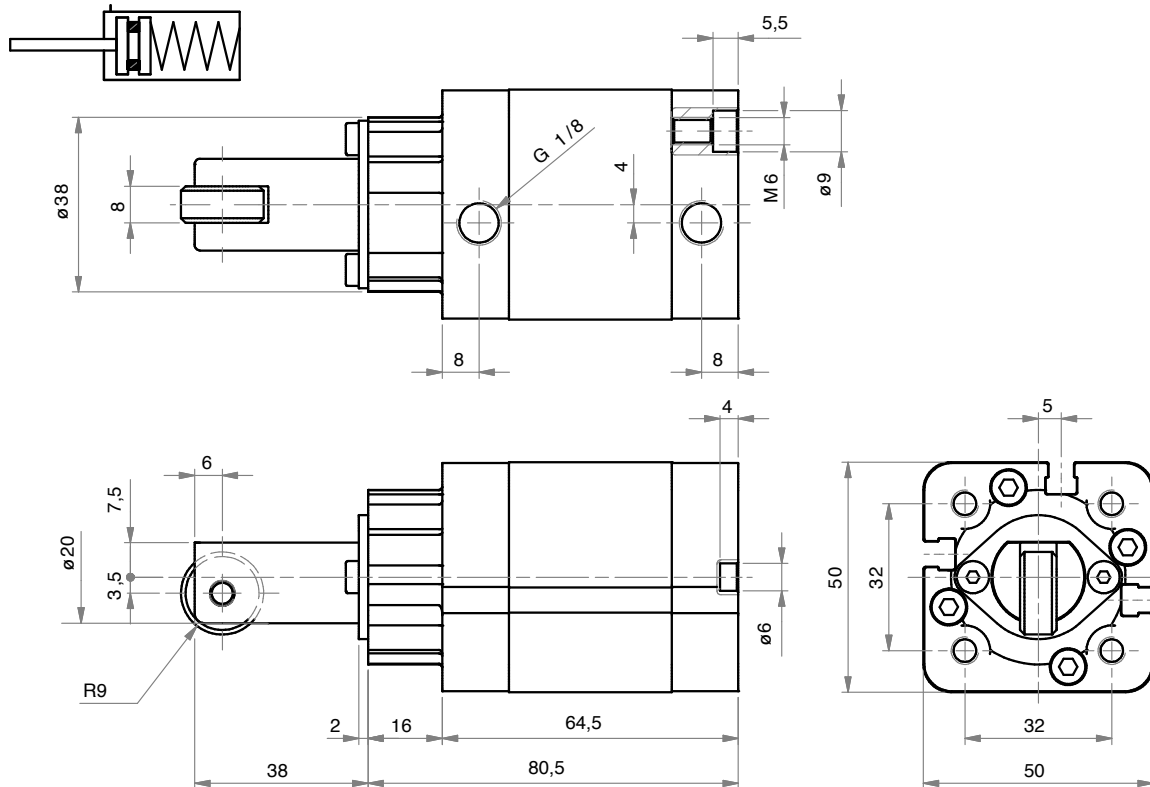


AST050.030.GS.L

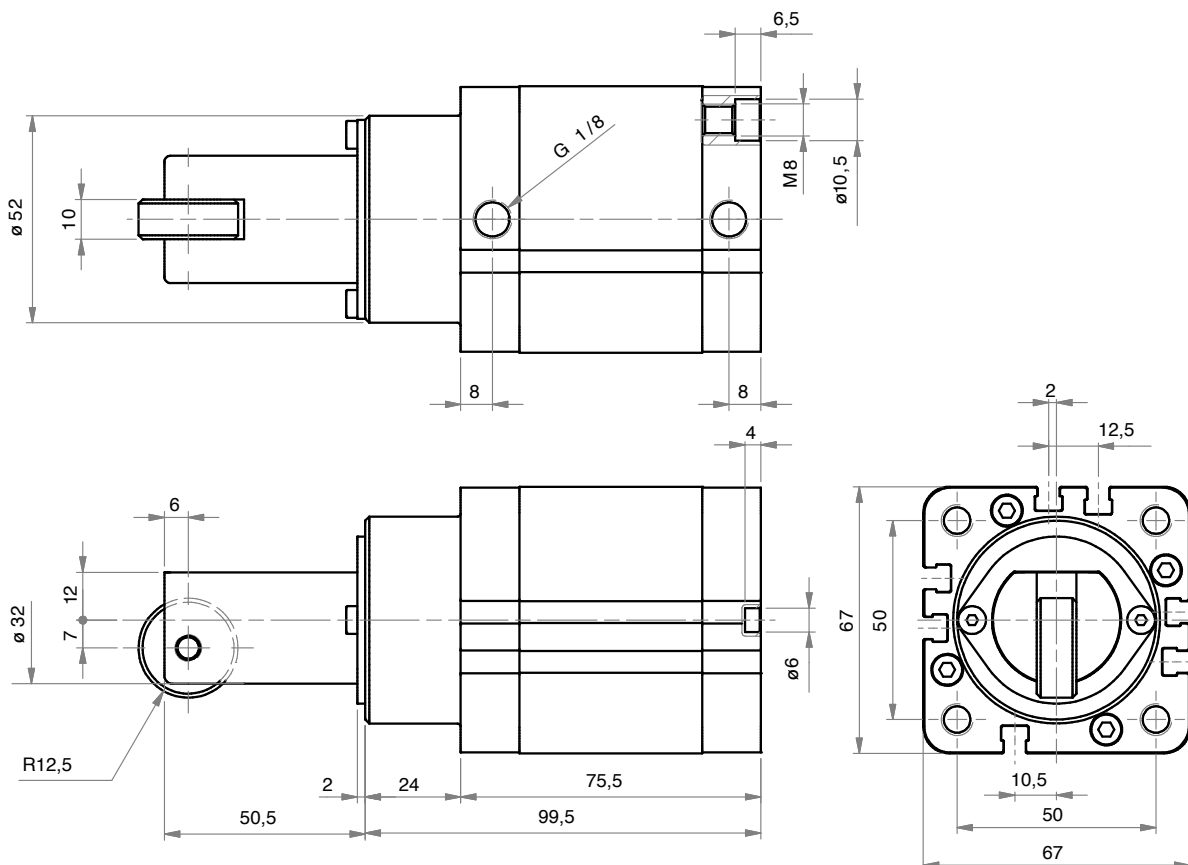


AST

AST032.020.GS.R



AST050.030.GS.R



SENSORI MAGNETICI - MAGNETIC SENSORS

CODICE - CODE	36.SEN06	36.SEN07	36.SEN08	36.SEN09
TIPO - TYPE	REED	REED	ELETTRONICO	ELETTRONICO
Modello elettrico - <i>Electrical design</i>	AC/DC PNP/NPN	AC/DC PNP/NPN	DC PNP	DC PNP
Funzione dell'uscita - <i>Output</i>	NO	NO	NO	NO
Tensione di esercizio - <i>Operating voltage</i>	[V] 5...120 AC/DC	5...60 DC / 5...50 AC	10...30 DC	10...30 DC
Capacità di corrente - <i>Current rating</i>	[mA] 100*	100*	100	100
Sensibilità di reazione - <i>Magnetic sensitivity</i>	[mT] 2,1	2,1	2,8	2,8
Velocità di passaggio - <i>Travel speed</i>	[m/s] > 10	> 10	> 10	> 10
Protezione da cortocircuito - <i>Short-circuit proof</i>	no	no	si - yes	si - yes
Protetto da inversione di polarità <i>Reverse polarity protection</i>	si - yes	si - yes	si - yes	si - yes
Resistente a sovraccarico - <i>Overload protection</i>	no	no	si - yes	si - yes
Caduta di tensione - <i>Voltage drop</i>	[V] < 5	< 5	< 2,5	< 2,5
Isteresi - <i>Hysteresis</i>	1	1	< 1,5	< 1,5
Riproducibilità - <i>Repeatability</i>	[mm] ± 0,2	± 0,2	< 0,2	< 0,2
Corrente assorbita - <i>Current consumption</i>	[mA] -	-	< 10	< 10
Tempo di commutazione - <i>Make time</i>	[ms] ≤ 0,6	≤ 0,6	-	-
Tempo di riapertura - <i>Fall time</i>	[ms] ≤ 0,1	≤ 0,1	-	-
Potenza max - <i>Switching power max</i>	[W] 10	10	-	-
Cicli di commutazione con connessione a PLC <i>Switching cycles when connected to PLC</i>	[mln] ≤ 40	≤ 40	-	-
Frequenza di commutazione - <i>Switching frequency</i>	[Hz] 1000	1000	> 10000	> 10000
Temperatura ambiente - <i>Ambient temperature</i>	[°C] -25...70	-25...70	-25...80	-25...80
Grado/Classe di protezione - <i>Protection</i>	IP67, II	IP67, II	IP67, III	IP67, III
Materiale involucro - <i>Housing material</i>	PA (poliammide - <i>polyamide</i>)			
Materiale eccentrico di fissaggio - <i>Fastening clamp</i>	inox - <i>stainless steel</i>			
Indicazione della funzione Stato di commutazione <i>Function display Switching status</i>	LED	giallo - <i>yellow</i>		
Collegamento - <i>Connection</i>	cavo PUR PUR cable / 2 m 2x0,14 mm ²	cavo PUR PUR cable / 0,3 m SPINA M8	cavo PUR PUR cable / 0,3 m SPINA M8	cavo PUR PUR cable / 2 m 3x0,14 mm ²
Peso - <i>Weight</i>	[kg] 0,025	0,01	0,012	0,028

Accessori inclusi - *Accessories included*

Segnaposto in gomma, fascetta fermacavo - *rubber placeholder, cable clip*

*: necessario circuito di protezione esterno per carico induttivo (valvola, relè, ecc...). - *External protective circuit for inductive load (valve, contactor, etc...) necessary.*

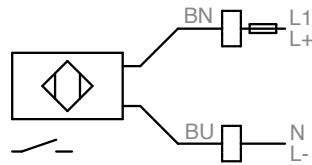
REED: nessuna funzione LED in caso di inversione di polarità nel funzionamento DC. - *no LED function in case of polarity reversal in DC operation.*

36.SEN06

CONTATTO REED - REED CONTACT

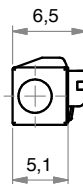
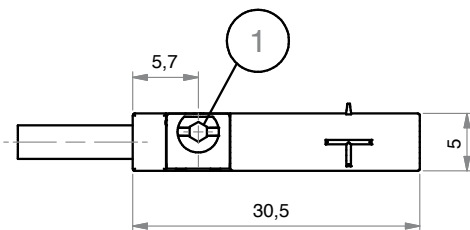
2 FILI - 2 WIRES

CABLAGGIO - WIRING



BN= MARRONE - BROWN

BU= BLU' - BLUE



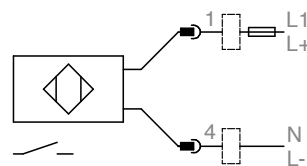
1= ECCENTRICO DI FISSAGGIO - FASTENING CLAMP

36.SEN07

CONTATTO REED - REED CONTACT

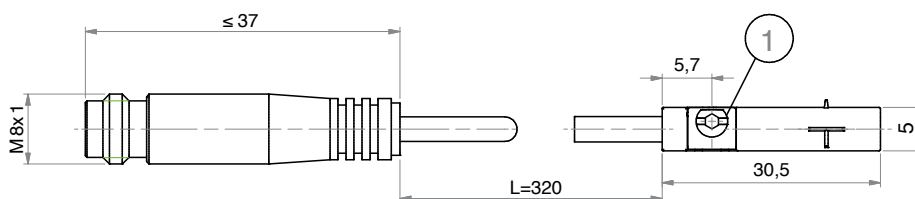
CONNETTORE M8 - M8 CONNECTOR

CABLAGGIO - WIRING



BN= MARRONE - BROWN

BU= BLU' - BLUE

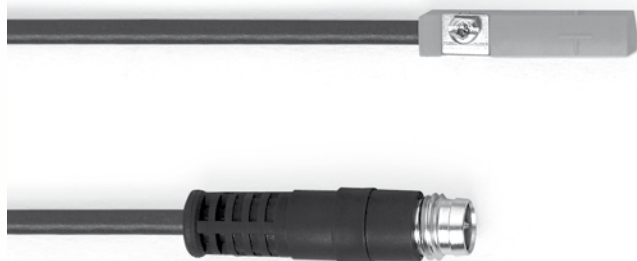


1= ECCENTRICO DI FISSAGGIO - FASTENING CLAMP

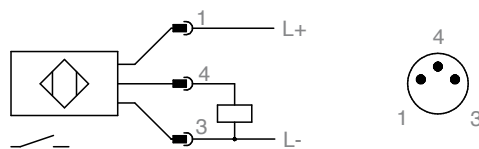
CONTATTO PNP - PNP CONTACT

CONNETTORE M8 - M8 CONNECTOR

36.SEN08

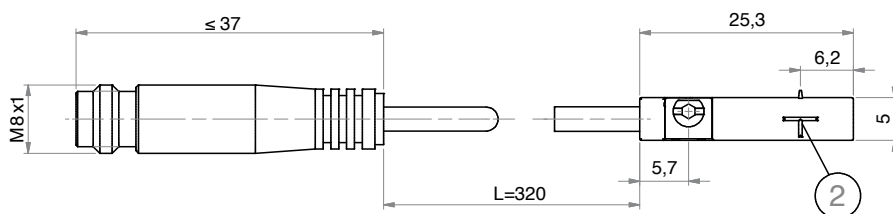


CABLAGGIO - WIRING



BN= MARRONE - BROWN

BU= BLU' - BLUE



1= ECCENTRICO DI FISSAGGIO - FASTENING CLAMP
2= SUPERFICIE ATTIVA - SENSING FACE

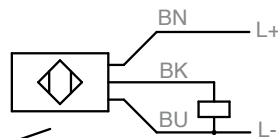
CONTATTO PNP - PNP CONTACT

3 FILI - 3 WIRES

36.SEN09



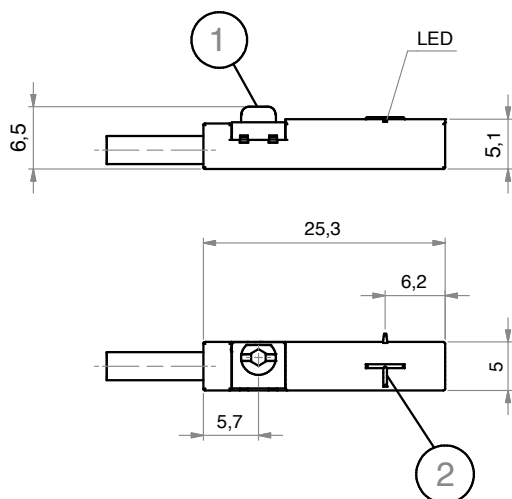
CABLAGGIO - WIRING



BK= NERO - BLACK

BN= MARRONE - BROWN

BU= BLU' - BLUE



1= ECCENTRICO DI FISSAGGIO - FASTENING CLAMP
2= SUPERFICIE ATTIVA - SENSING FACE



ARTEC SRL Via Pisacane, 15 - 44042 CENTO (FE) - ITALY

T +39 051 683 62 20 - **F** +39 051 683 08 82

info@artec-pneumatic.com - www.artec-pneumatic.com