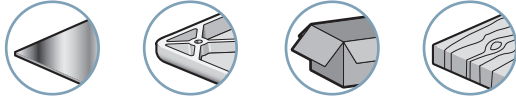


Branch-specific applications



Description

The GVP series vacuum pumps are the simplest in the modular range. They exist in 5 levels of power (evacuation time) and 3 different levels of maximum vacuum:

- Version X (50% vacuum for very porous products).
- Version T (75% vacuum for porous products).
- Version N (90% vacuum for air-tight products).

For the same nozzle diameter, the suction flow increases proportionally to the decrease in the maximum vacuum level.

In addition to suction pads, they can also be used for dosing liquid, spraying and tank depressurization.

Advantages

- Can be adapted to all branches
- Optimized performance for handling all types of objects
- Modular design thanks to the different options
- Light and compact
- Silent operation
- No clogging thanks to the through type silencer

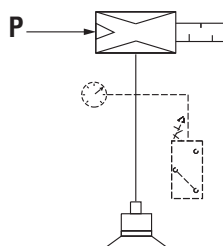
Characteristics

model	Ø nozzle (mm)	air consumed (NI/min)	maximum vacuum (%)			air drawn in (NI/min)		
			X	T	N	X	T	N
GVP 12	1.2	67	40	75	90	150	63	45
GVP 15	1.5	100	50	75	90	180	95	70
GVP 20	2	180	50	75	90	250	160	125
GVP 25	2.5	270	50	75	90	360	240	200
GVP 30	3	400	50	75	90	450	330	265

As standard, versions N and T are delivered with silencer S and version X with silencer K. Only exception, the GVP 30 is fitted with silencer K.

Evacuation time in seconds per liter

% vacuum	10			20			30			40			50			60			70			80			85		
	X	T	N	X	T	N	X	T	N	X	T	N	X	T	N	X	T	N	X	T	N	X	T	N	X	T	N
GVP12	0.05	0.10	0.14	0.11	0.22	0.30	0.22	0.37	0.49	0.62	0.55	0.71	-	0.78	0.97	-	1.16	1.33	-	1.92	1.81	-	-	2.66	-	-	3.42
GVP15	0.04	0.07	0.09	0.09	0.15	0.20	0.15	0.24	0.32	0.27	0.36	0.46	-	0.52	0.63	-	0.77	0.85	-	1.27	1.16	-	-	1.71	-	-	2.20
GVP20	0.03	0.04	0.06	0.06	0.09	0.12	0.11	0.14	0.19	0.19	0.22	0.28	-	0.31	0.38	-	0.46	0.52	-	0.76	0.71	-	-	1.04	-	-	2.13
GVP25	0.02	0.03	0.03	0.04	0.06	0.07	0.08	0.10	0.11	0.14	0.14	0.16	-	0.21	0.22	-	0.30	0.30	-	0.50	0.41	-	-	0.60	-	-	0.77
GVP30	0.01	0.02	0.02	0.03	0.04	0.05	0.06	0.07	0.08	0.11	0.10	0.12	-	0.15	0.17	-	0.22	0.23	-	0.37	0.31	-	-	0.45	-	-	0.58



Specifications

Supply	Non-lubricated filtered air, pressure 2 to 6 bar
Optimum pressure	4 bar
Weight	100 to 265 g
Material	POM - 2017A - Cu Zn
Temperature	-10 to 80 °C / 14 to 186°F

For all orders, please specify:

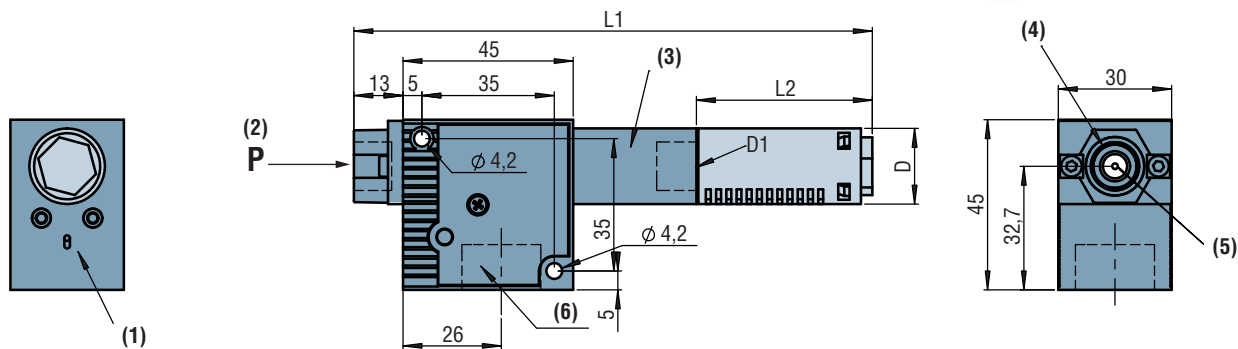
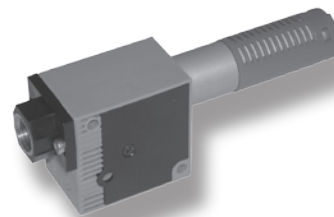
Model + Nozzle diameter + Characteristic + Silencer + Fitting

1: Model	2: Nozzle diameter	3: Characteristic	4: Silencer	5: C.A. fitting
GVP	12 1.2 mm	X 50% vacuum	- Without silencer	14 1/4 G BSPP
	15 1.5 mm	T 75% vacuum	S ⁽¹⁾ Diffuser	68 6x8 calibrated tube
	20 2 mm	N 90% vacuum	K Through-type	
	25 2.5 mm			
	30 3 mm			

(1) no silencer for nozzle Ø 30.

E.g. **GVP 30 T K 68**

(GVP series modular vacuum pump, nozzle diameter 3mm, 75 % vacuum with through type silencer and 6x8 calibrated tube fitting)



- (1) Option mounting zone
- (2) 4 bar compressed air tank
- (3) Exhaust
- (4) 1/4 Gas, fast 6x8
- (5) Compressed air connection
- (6) Vacuum 1/2 Gas

models	D (mm)		D1 (Gas)		L1 ⁽¹⁾ (mm)		L2 (mm)		
	X	N/T	X	N/T	X	N/T	S	K(N/T)	K(X)
GVP 12	30	20	1/2	1/4	160	127	45	68	121
GVP 15	30	20	1/2	1/4	160	137	45	68	121
GVP 20	30	30	1/2	1/2	198	137	60	121	121
GVP 25	30	30	1/2	1/2	198	137	60	121	121
GVP 30	30	30	1/2	1/2	270	270	-	121	121

(1) L1 with standard silencer (S).

Additional information

Options

- Vacuum switches see page 8/16.
- Other options see pages 8/17 and 8/18.

Curves

See page 8/19.